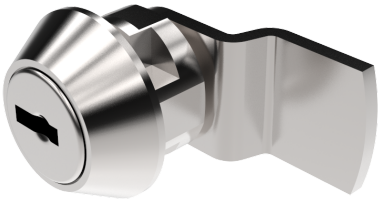


## CYLINDER LOCKS



Cylinder lock with clip-in mounting. The product number is individual for each specific application. Refer to lock type 4900, define the L- and H-measurement according to attached drawing, mounting context and requirements, for defining the unique product number.



### MATERIAL

**Clip:** Steel, zinc plated

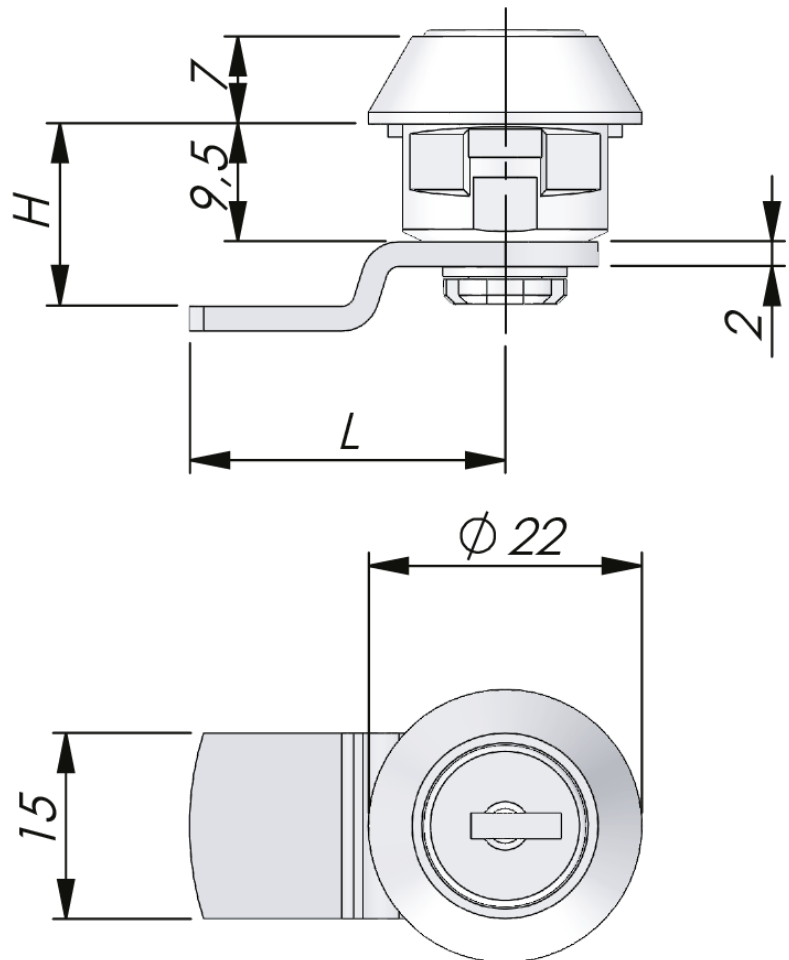
**Cam:** Steel, zinc plated

**Cylinder:** Zinc die cast, stainless steel 304 cap

**Housing:** Zinc die cast, chrome plated

### TECHNICAL INFORMATION

**Cylinder information:** Master key system on request, Supplied with two keys  
Products are available on request only.



**Industrilas**  
— When access counts —

P/N	Cam fixation	Door thickness (T)	Key extraction	Key Combinations	Opening rotation
4900-01	C-clip	0,8 - 1,5 mm	Open / Closed	200	180°
4900-02	C-clip	1,6 - 2,3 mm	Open / Closed	200	180°
4900-03	C-clip	0,8 - 1,5 mm	Closed	200	90° clockwise
4900-07	Rivet	0,8 - 1,5 mm	Open / Closed	200	180°
4900-08	Rivet	1,6 - 2,3 mm	Open / Closed	200	180°
4900-09	Rivet	0,8 - 1,5 mm	Closed	200	90° clockwise
4900-13	C-clip	0,8 - 1,5 mm	Open / Closed	200	90° clockwise
4900-14	C-clip	1,6 - 2,3 mm	Open / Closed	200	90° clockwise
4900-15	C-clip	0,8 - 1,5 mm	Open / Closed	200	90° counter clockwise
4900-17	Rivet	0,8 - 1,5 mm	Open / Closed	200	90° clockwise
4900-19	Rivet	0,8 - 1,5 mm	Open / Closed	200	90° counter clockwise
4900-20	Rivet	1,6 - 2,3 mm	Open / Closed	200	90° counter clockwise
4900-47	C-clip	0,8 - 1,5 mm	Open / Closed	500	180°
4900-48	C-clip	1,6 - 2,3 mm	Open / Closed	500	180°

